



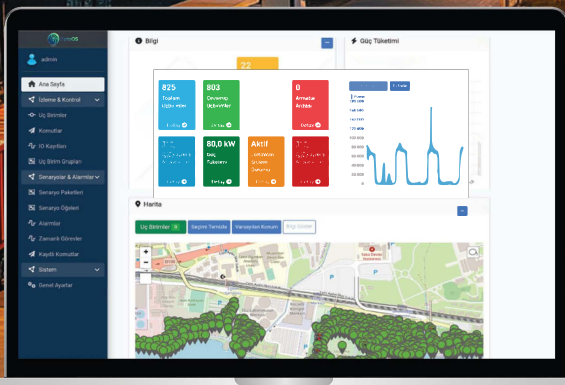
# OptoOS



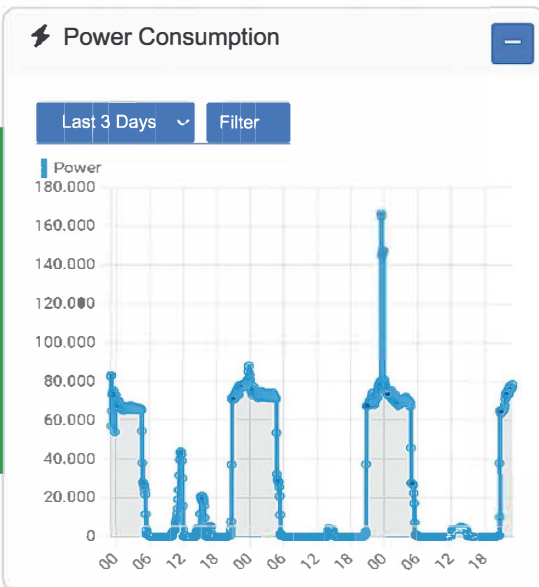
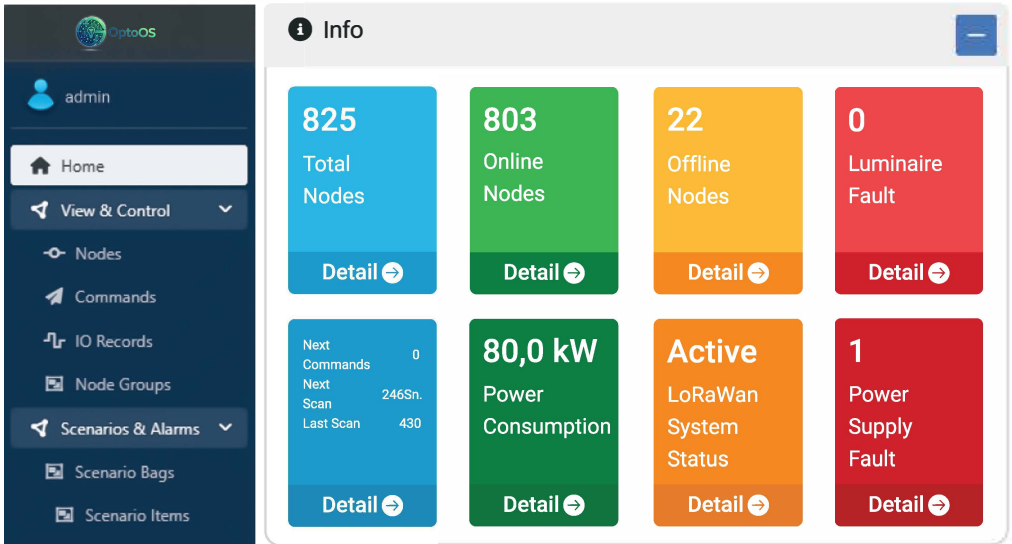
# Easy Solutions to Smart City Lighting Systems

OLIOS allows you to manage your smart city lighting system from a single interface.

With its user-friendly and intuitive interface, OLIOS provides ease of use with control and monitoring functions. It makes it possible to control lights individually or in groups and monitor the necessary data related to the fixtures.



# Dashboard



On the main screen, it provides convenience to the user by displaying important information such as the status information of the terminals, their locations on the map, and the power consumption graph simultaneously on a single screen.



# Scenarios & Alarms

Scenario Items

Create New Delete All

All Scenarios Set Filter Clear Filter

Edit Date	Scenario UID	Title	Command Type	Active Date Start	Active Date Stop	Day Of Week	Time Type	Time	Port	Value
3/29/2024 3:39:44 PM	4934	Restaurants Area Midnight	dim	01/01	31/12		timeType_normal	02:00	1	["dim level":70]
3/29/2024 3:40:03 PM	2C75	Restaurants Evening	dim	01/01	31/12		timeType_normal	20:00	1	["dim level":100]
3/29/2024 3:40:45 PM	EC99	Parks 02:00	dim	01/01	31/12		timeType_normal	02:00	1	["dim level":30]
3/29/2024 3:41:17 PM	43E7	Parks 18:00	dim	01/01	31/12		timeType_normal	18:00	1	["dim level":50]
3/29/2024 3:41:55 PM	081A	All Areas Sunrise	dim	01/01	31/12		timeType_sunrise	0	1	["dim level":0]

Showing 1 to 6 of 6 entries

## Set Nodes Lighting Level

Slider control for Set Nodes Lighting Level.

Set Dim

Set RTC Time

Request Status

Request Location

Request Dali 2 Error Status

Request Dali 2 Parameters

Request RTC

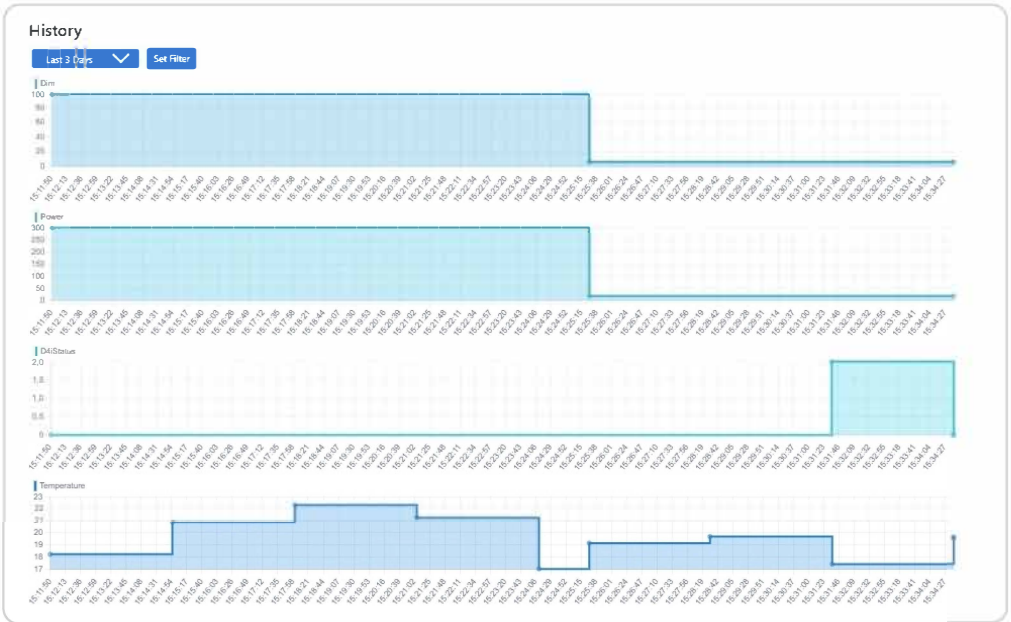
Request Scenario

Request Motion Scenario

Request Software Version

With Olios, there is no need to constantly monitor conditions. The alarm feature makes your workflow easier by automatically notifying you when certain conditions and values are met for the desired products.

# Product Details



For users who want to see detailed information, it shows product information and all measurable data in detail.

## IO Status

I/O Name	Value	Status	Time
Temperature	19.60	-	29/03/24 15:34:41
Relay 1	1	-	29/03/24 15:34:41
D4i Status	0	-	29/03/24 15:34:41
Power	018	-	29/03/24 15:34:41
Light Dim Level	6	-	29/03/24 15:34:41
SNR	1	-	29/03/24 15:34:41
RSSI	-48	-	29/03/24 15:34:41

# Manage from Anywhere



The smart city lighting control application, Olios, can be easily managed from a computer, tablet, or mobile phone. Details such as light level, status information, GPS location, scenarios, connection quality, temperature, power, and consumption are monitored in detail.



# OptoOS

*Contact Us!*

[www.optosmart.uk](http://www.optosmart.uk)  
[info@optosmart.uk](mailto:info@optosmart.uk)

