

# OptoLed

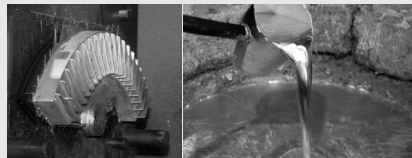
Saving Energy





AFC LIGHTING / OPTOLED, Lighting with expert staff, the manufacture of interior and exterior lighting fixtures, lighting desing, engineering services, installation and commissioning during the consultation, after-sales service issues serve. We contounie produce in two different facilities in a closed 6500 m2 within 10.000 m2 total plant area, to produce standard and decorative lighting poles.

### Aluminum Die-Cast Plant



### Surface Mounting Technology

Our Engineers design the electronic cards and components for our fixtures.



The machine, is the most important factor for mass production of , has 40,000 pieces per hour electronic component placement capacity



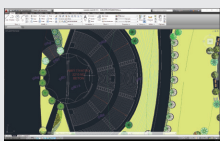
### Powder Coating Plant

We can paint up to h:14mt. Products in our two different powder coating plant.



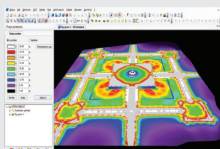
### Mold Production Area

We can make die-cast aluminum mold, plastic injection mold and cast aluminum mold in our factory.



### Project Department

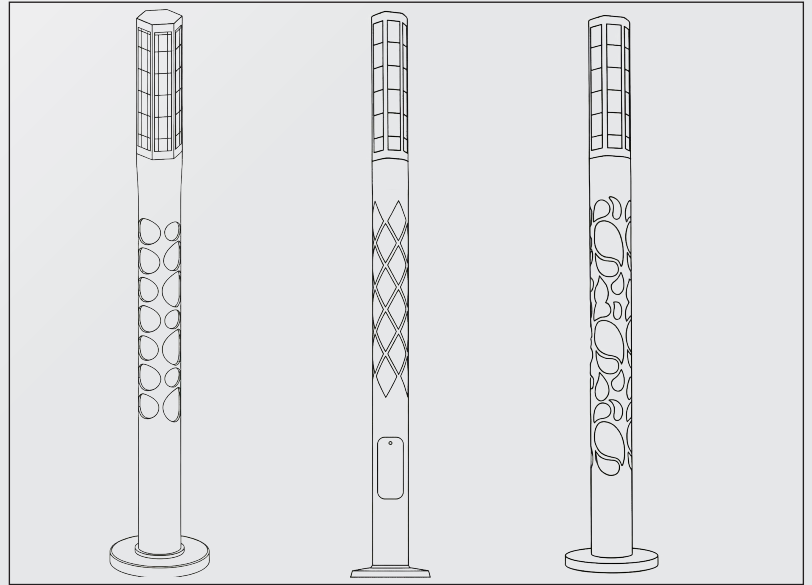
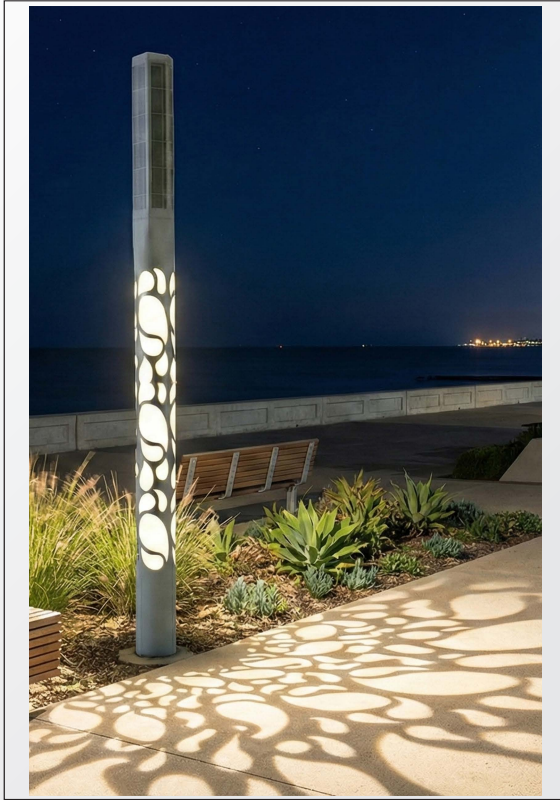
Your project is prepared by AutoCAD then define solutions details in infrastructure. Our Lighting Simulation Team includes professional engineers who are experts in performing lighting simulations software such as Dialux.



Our designers, in line with the work of project engineers, as your project is Created by realistic presentations by 3D Max, V-Ray , After Effect and high-level video editing software such as Visualization and Effect.



**OptoLed**  
Saving Energy



20-30 Watts	3000K - 6500K	IP66	IK08	Dali
-------------	---------------	------	------	------

## Electrical Details

Input Voltage (V)	220 - 240 VAC
Frequency (Hz)	50/60 Hz
Power Consumption (W)	20-30W
Power Factor	>0,9
Current (mA)	400mA - 1500mA
Surge Protection	4kV, Internal
Electrical Installation Grade	Class I
Control Option	ON/OFF DALI Dimable

## Electric and Electronic Components

Printed Circuit Board(s) (PCBs)	FR4, 1,60mm Aluminum Board
LED Chip(s)	Cree, LUMILEDS
LED Chip Type	Power LED/Mid Power LED
LED Driver(s)	Meanwell, OSRAM
Optics	LEDIL
Anti-glare	Diffuser
Cable(s)	2x0,75mm TTR(H05VV-F) 3x1,50mm TTR(H07RN-F)
Connector(s)	3 Pin Solder I Type Female-Male Waterproof

## Pole Body Specs

Dimensions	3-6 Meters
Body Type	Tubular / Conical Pole
Material	Galvanized Steel / Aluminum

## Solar Details

Solar Panel Dimensions	500mm x 500mm
Solar Panel	42Wp Solar Panel
Battery	360 - 700 Whr LiFePO4
Charger	MPPT

## Product Datasheet

### Product Description

Product Type	Lighting Pole
Product Name	Colonna
Installation Environment	Outdoor
Application Areas	City, Highway, Promenades
Applicable Mounting Settings	On Ground
Light Distribution	Asymmetrical

### Mechanical Details

Luminaire Housing	Aluminum Body
Base Body	Aluminum Body
Heatsink	Aluminum Injection
Anchor Plate	Yes
Diffuser Options	Optic Lens
Fasteners	A4 Stainless Steel (EN ISO 3506-1)
Pre-coating	.....
Final Coating	Electrostatic Powder Coating
Coating Color Options	Customized (RAL Catalogue)
Ingress Protection (IP Rating)	IP66
Impact Resistance (IK Rating)	IK08

### Optical Details

Beam Angle	Asymetrical
Color Rendering Index (CRI)	>80
Luminous Efficiency	90 - 110 lm/W
Luminaire Luminous Flux	1800 lm - 3300 lm

### Product Configurations

Product	Power (W)	Luminous Flux (Lm)	Color Tempeture (K)	CRI
Colonna	20W	2200lm.	4000	>80
Colonna	25W	2750lm.	4000	>80



