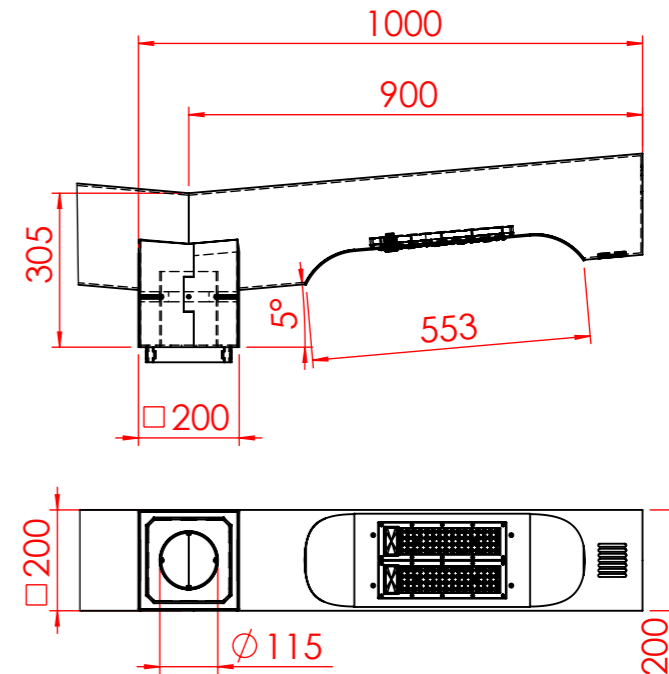
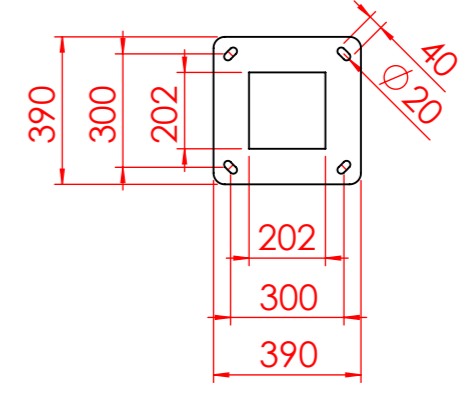


SECTION A-A
SCALE 1 : 30

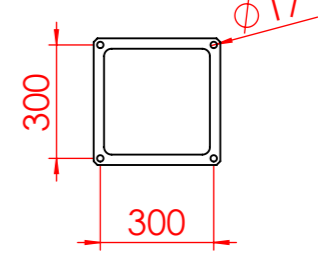


BASE PLATE DETAIL
ALUMINUM



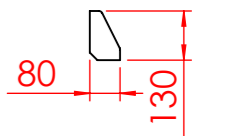
SCALE 1 : 20 t:10mm

TEMPLATE DETAIL
GALVANIZED STEEL



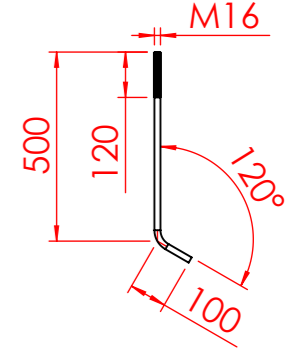
SCALE 1 : 20 t:2mm

FLAG DETAILS
ALUMINUM



SCALE 1 : 20 t:6mm

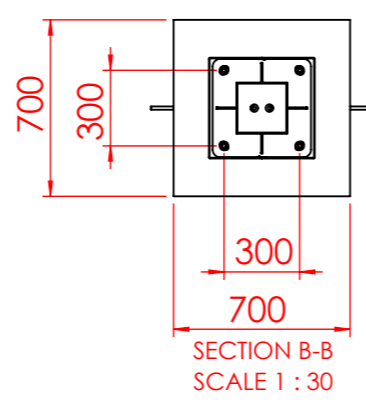
ANCHOR BOLT DETAILS
GALVANIZED STEEL



SCALE 1 : 20

GENERAL NOTS:

1. ALL DIMENSION ARE IN MILIMETER.
2. DESIGN STANDART EN40.
3. DESIGN WILD SPEED 130 km/h.
4. ALL CAST ALUM. ALLOY SHALL B 380,1 (E101-160).
5. ALL FASTENERS SHALL BE STAINLESS STEEL GR. 316 EQUIVALENT UNLEDD OTHER SPECIFIED.
6. ALL WELDING SHALL BE DORE IN ACCORDANCE WIHT THE ANSI /BS EN ISO 9692-1-EQV-ALUMINUM .
7. ALL WELDING SHALL BE DORE IN ACCORDANCE WIHT THE ANSI /BS EN ISO 9692-1-EQV-STEEL.
8. SUPER DURABLE POWDER COATUNG BS.6496-1984 THICKNESS 100 MICRON (AVENAGE) BS EN 12206-1:2000.
9. STEEL REINFORCEMENT CORE-HOT DIP GALVANIZED.
10. PIPE : BS EN 10219-1 -EQV
11. ANCHOR BOLT & BASE PLATE: ASTM A572M GR. 345 OR EQUI.
12. FINISHING: PAINTED / COATED (RAL 7024)



SECTION B-B
SCALE 1 : 30

Proje Project	Tarih Date	Adı Soyadı Name Surname	İmza Sign	Malzeme Material																					
Çizen / Desinger	11.08.2023	YUSUF SALİH																							
Kontrol /Controller																									
Parça Adı Part Name	H:5m SEGA DOUBLE POLE				Klasör Binder																				
Ölçek Scale	Vida Anma Çapları Genel Tablosu The General Table For Screw Nominal Diameter				Dosya Adı File Name																				
1/1 A3	<table border="1"> <thead> <tr> <th>Belirtilmeyen toleranslar</th> <th colspan="3">Unspecified Tolerance</th> </tr> <tr> <th>Aralık</th> <th>0.5 ≤ 6</th> <th>6 ≤ 30</th> <th>30 ≤ 120</th> </tr> </thead> <tbody> <tr> <td>İnerval</td> <td>±0.05</td> <td>±0.1</td> <td>±0.15</td> </tr> <tr> <td>Hassas-Precision</td> <td>±0.05</td> <td>±0.1</td> <td>±0.15</td> </tr> <tr> <td>Orta-Moderate</td> <td>±0.1</td> <td>±0.2</td> <td>±0.3</td> </tr> </tbody> </table>				Belirtilmeyen toleranslar	Unspecified Tolerance			Aralık	0.5 ≤ 6	6 ≤ 30	30 ≤ 120	İnerval	±0.05	±0.1	±0.15	Hassas-Precision	±0.05	±0.1	±0.15	Orta-Moderate	±0.1	±0.2	±0.3	Resim No Picture No
Belirtilmeyen toleranslar	Unspecified Tolerance																								
Aralık	0.5 ≤ 6	6 ≤ 30	30 ≤ 120																						
İnerval	±0.05	±0.1	±0.15																						
Hassas-Precision	±0.05	±0.1	±0.15																						
Orta-Moderate	±0.1	±0.2	±0.3																						
					Revizyon No Revision No																				

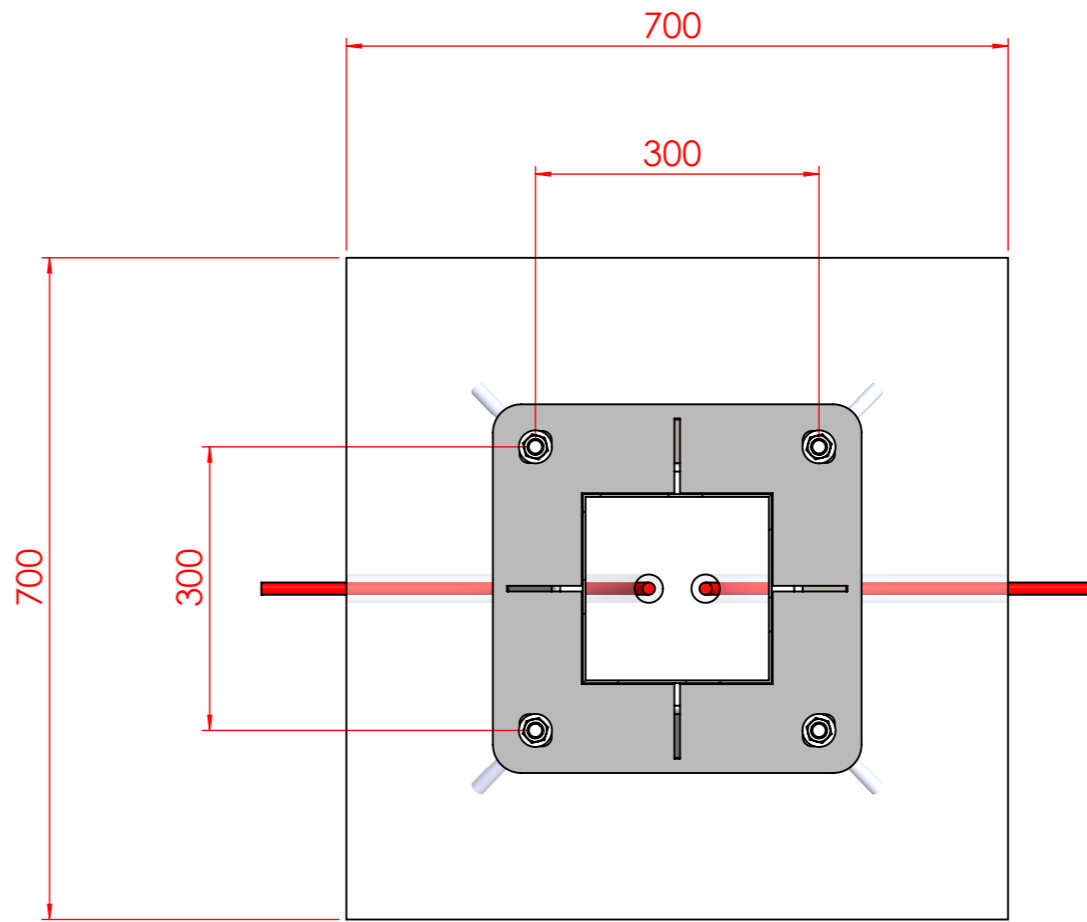
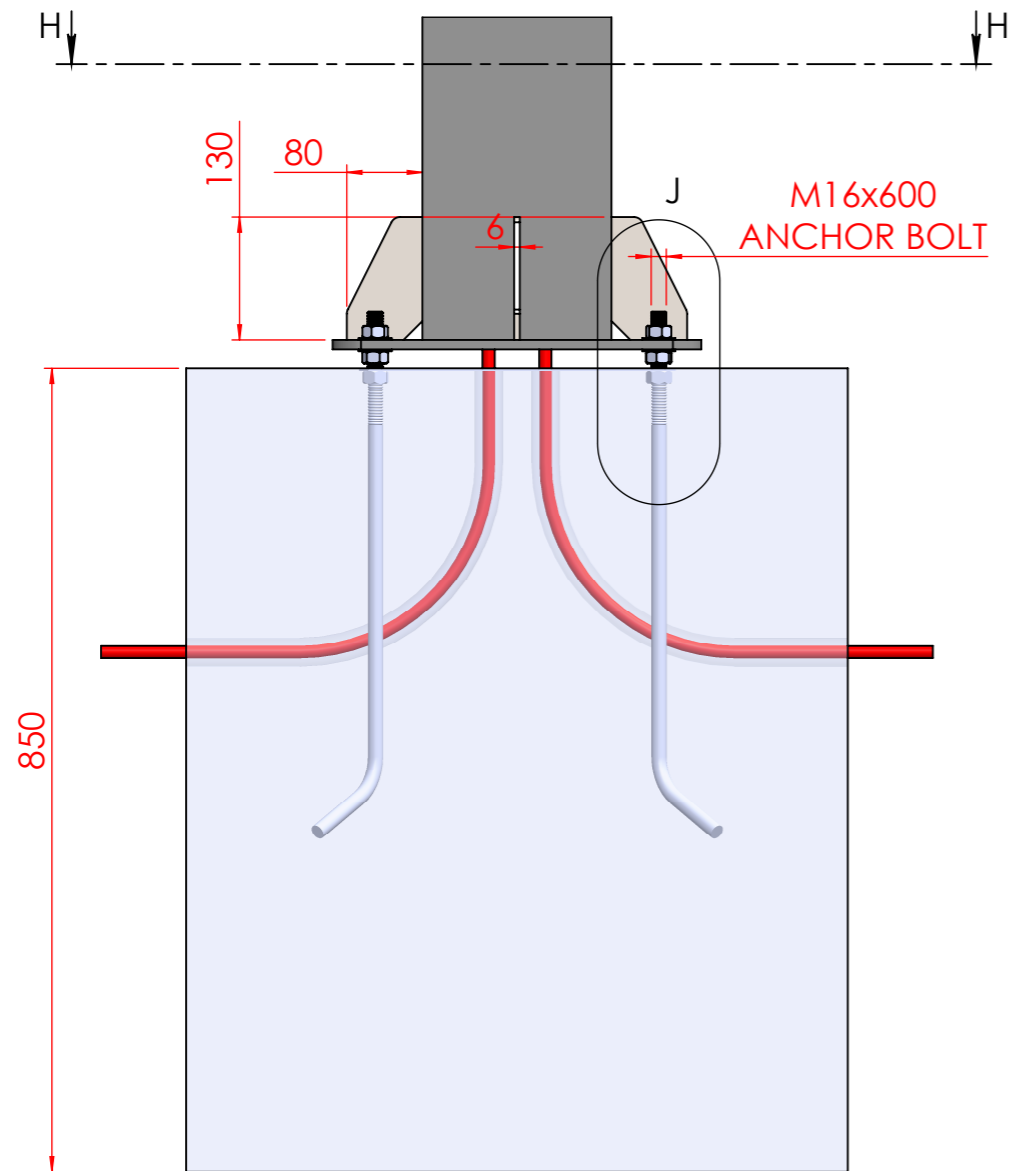
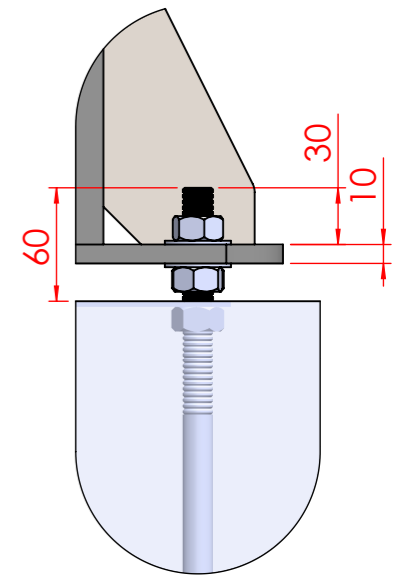
PROJ.NO:2307017

WATERFRONT DEVELOPMENT PROJECT

1/2

GENERAL NOTS:

1. ALL DIMENSION ARE IN MILIMETER.
2. DESIGN STANDART AASHTO.
3. DESIGN WILD SPEED 160 km/h.
4. ALL CAST ALUM. ALLOY SHALL B 380,1 (Efilal-160).
5. ALL FASTENERS SHALL BE STAINLESS STEEL GR. 316 EQUIVALENT UNLEDD OTHER SPECIFIED.
6. ALL WELDING SHALL BE DORE IN ACCORDANCE WIHT THE ANSI /BS EN ISO 9692-1- EQV-ALUMINUM .
7. ALL WELDING SHALL BE DORE IN ACCORDANCE WIHT THE ANSI /BS EN ISO 9692-1- EQV-STEEL.
8. SUPER DURABLE POWDER COATUNG BS.6496-1984 THICKNESS 100 MICRON (AVENAGE) BS EN 12206-1:2000.
9. STEEL REINFORCEMENT CORE-HOT DIP GALVANIZED.
10. PIPE : BS EN 10219-1 -EQV
11. ANCHOR BOLT & BASE PLATE: ASTM A572M GR. 345 OR EQUI.
12. FINISHING: PAINTED / COATED (RAL # TO BE PROVIDED BY THE CUSTOMER)

SECTION H-H
SCALE 1 : 8DETAIL J
SCALE 1 : 4

Proje <i>Project</i>	Tarih <i>Date</i>	Adı Soyadı <i>Name Surname</i>	İmza <i>Sign</i>	Malzeme <i>Material</i>	OptoLed Saving Energy								
Çizen / Desinger	11.08.2023	YUSUF SALİH											
Kontrol /Controller													
Parça Adı <i>Part Name</i>	H:5m SEGA DOUBLE POLE				Klasör <i>Binder</i>	PROJ.NO:2307017							
Ölçek <i>Scale</i>	Vida Anma Çapları Genel Tablosu <i>The General Table For Screw Nominal Diameter</i>						Dosya Adı <i>File Name</i>	WATERFRONT DEVELOPMENT PROJECT					
1/1 A3	Anma Çapı <i>Nominal Diameter</i>	1/2"	3/4"	1"	1 1/4"	1 1/2"	2"	Aralık <i>Inreval</i>	0.5 ≤ 6	6 ≤ 30	30 ≤ 120	Resim No <i>Picture No</i>	2/2
	Dişi - Internal	19.2 ⁰ _{-0.2}	24.7 ⁰ _{-0.2}	31 ⁰ _{-0.2}	39.6 ⁰ _{-0.2}	45.5 ⁰ _{-0.2}	57.3 ⁰ _{-0.2}	Hassas-Precision	±0.05	±0.1	±0.15	Revizyon No <i>Revision No</i>	
	Erkek -External	20.7 ^{+0.1} ₀	26.2 ^{+0.1} ₀	32.9 ^{+0.1} ₀	41.6 ^{+0.1} ₀	47.5 ^{+0.1} ₀	59.3 ^{+0.1} ₀	Orta- Moderate	±0.1	±0.2	±0.3		